

RIVERHOMES

**Pump House Crescent
Brentford TW8**

**£ 800,000
Leasehold**



RIVERHOMES

West London Branch
28 Thames Road
London
W4 3RJ

020 8995 0500
www.riverhomes.co.uk

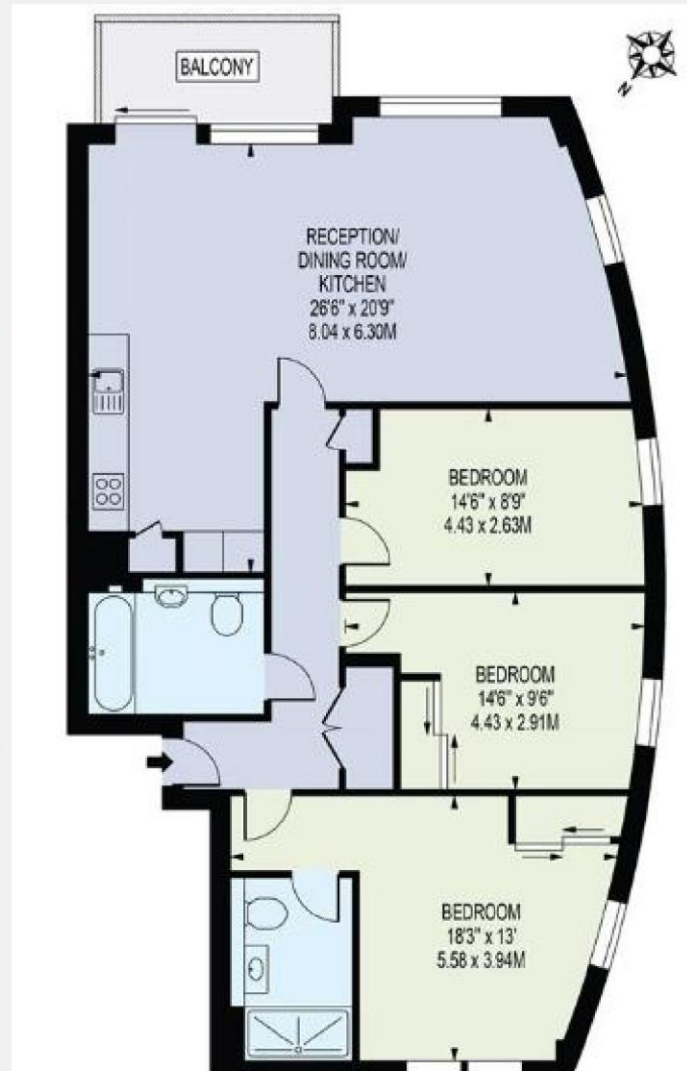
A spectacular apartment in the popular Kew Bridge West development. The apartment exudes elegance and provides a 26 ft. double aspect living space incorporating the state-of-the-art kitchen / dining area and living room with access out to the terrace enjoying panoramic views of the River Thames and London cityscape. There is a double aspect master suite with built-in wardrobes and en suite bathroom, two further double bedrooms and a separate family / guest bathroom. There is private and secure underground parking, a fully equipped gym suite for use of the residents, on-site concierge and the apartment is a stone's throw from Kew Bridge Station.

ENERGY PERFORMANCE CERTIFICATE

Score	Energy rating	Current	Potential
92+	A		
81-91	B		
69-80	C	74 C	74 C
55-68	D		
39-54	E		
21-38	F		
1-20	G		

KEY INFORMATION

Local authority:	London Borough of Hounslow
Internal area:	1,045 sq. ft. / 97.08 sq. m.
No. of bedrooms:	3
Local council tax:	F
Lease length:	990 years approx.
Ground rent:	£350 per annum approx.
Service charge:	£5,400 per annum approx.



World Waterside Ltd trading as riverhomes for themselves and its clients give notice that 1: They are not authorised to make or give any representations or warranties in relation to the property either here or elsewhere, either on their own behalf or on behalf of their client or otherwise. 2: These particulars do not form part of any offer or contract and must not be relied upon as statements or representations of fact. Any areas, measurements or distances are approximate. The text, photographs and plans are for guidance only and are not necessarily comprehensive. 3: It should not be assumed that the property has all necessary planning, building regulation or other consents and any services, equipment or facilities have not been tested. 4: Lease details, service charges, ground rent (where applicable) and council tax are given as a guide only and should be checked and confirmed by your Solicitor prior to exchange of contracts. 5: They assume no responsibility and any intending purchasers or tenants must satisfy themselves by inspection or otherwise as to the correctness of each of the statements contained within these particulars. If you require clarification of any points please contact us.